

# DIGITAL VIDEO RECORDER

## Quick Start Guide

**V1.0.0**

## Welcome

Thank you for purchasing our Digital Video Recorder (DVR).

This Quick Start Guide (hereinafter referred to be "the Guide") will help you become familiar with our DVR in a short time.



Please read the Guide carefully before starting using your DVR and properly keep it for future reference.

## Important Safeguards and Warnings

- To secure your device, it is strongly recommended to create a strong password and change it periodically especially in the high security system.
- All installation and operations herein should conform to your local electrical safety codes. We assume no liability or responsibility for all the fires or electrical shock caused by improper handling or installation.
- Improper battery use might result in fire, explosion, or personal injury.
- When replacing the battery, make sure the same model is used.
- We assume no liability or responsibility for any problems caused by unauthorized modifications or attempted repair.
- Use a power supply that meets the requirements for SELV (Safety Extra Low Voltage) and complies with Limited Power Source according to IEC 60950-1. Refer to the device label for detailed information.

## Safety Icons

The following categorized signal words with defined meaning might appear in the Guide.

Signal Words	Meaning
 CAUTION	Indicates a potential risk which, if not avoided, may result in property damage, data loss, lower performance, or unpredictable result.
 NOTE	Provides additional information as the emphasis and supplement to the text.

## About this Guide

- The Guide is a general document for introducing the product, so there might be some functions described for DVR in the Guide not apply to the model you purchased, or the interfaces might be different, or the operations might be different, and in these cases the actual product shall govern.
- All the designs and software are subject to change without prior written notice.

- All trademarks and registered trademarks mentioned herein are the properties of their respective owners.
- Any loss caused by not complying with the operations described in the Guide should be borne by the user.
- Upgrade the reader software or try other mainstream reader software if the Guide (in PDF format) cannot be opened.
- There still might be deviation in technical data, functions and operations description, or errors in print. If there is any doubt or dispute, please refer to our final explanation.
- Please visit our website or contact your local service engineer for more information.

# Table of Contents

<b>Foreword</b> .....	<b>I</b>
<b>1 Quick Start</b> .....	<b>1</b>
1.1 Unpacking the Accessories.....	1
1.2 Checking the Components.....	1
1.3 Installing Hard Disk Drive (HDD) .....	1
1.4 Booting up .....	2
<b>2 The Grand Tour for Rear Panel</b> .....	<b>3</b>
<b>3 Local Configurations</b> .....	<b>4</b>
3.1 Initializing DVR.....	4
3.2 Adding Remote Device .....	5
3.3 Configuring Recording Storage Schedule .....	5
3.4 Playing Recorded Video .....	6
3.5 Configuring P2P Settings.....	7
3.5.1 Entering P2P Interface.....	7
3.5.2 Adding DVR into Cell Phone Client .....	8
3.6 Logout .....	9
<b>4 Web Login</b> .....	<b>10</b>

# 1

## Quick Start

### NOTE

The actual appearance or quantity might be different depending on the model you purchased.


### 1.1 Unpacking the Accessories



Figure 1-1

### 1.2 Checking the Components

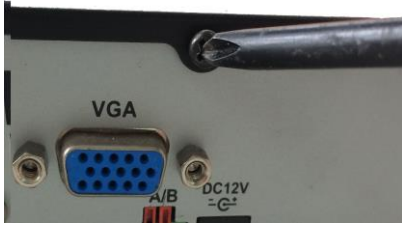
When you receive the DVR, please check against the following checking list. If any of the items are missing or damaged, contact the local retailer or after-sales engineer immediately.

Sequence	Checking items		Requirement
1	Package	Appearance	No obvious damage.
		Packing materials	No broken or distorted positions that could be caused by hit.
2	Labels	Labels on the device	Not torn up.  NOTE Do not tear up or throw away the labels; otherwise the warranty services are not ensured. You need to provide the serial number of the product when calling the after-sales service.
3	Device	Appearance	No obvious damage.
		Data cables, power cables, fan cables, and mainboard	No loose connection.

### 1.3 Installing Hard Disk Drive (HDD)

#### NOTE

- Please use the recommended HDD from the manufacturer.
- Shut down the DVR and unplug the power cable before opening the cover to replace the HDD.



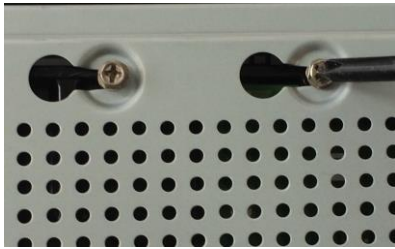
1. Remove the screws to take off the cover.



2. Fix the screws on the HDD but do not fasten them.



3. Put the HDD onto the DVR.



4. Turn the DVR to see the back side of it. Aim the screws of the HDD at the holes on the back of the DVR, and then fasten the screws.



5. Use the HDD cable and power cable to connect HDD and mainboard.



6. Put back the cover and fasten the screws.

## 1.4 Booting up



### CAUTION

Ensure the input voltage corresponds to the power requirement of the DVR.

Step 1 Connect the DVR to a display.

Step 2 Plug in the power cable to the DVR.

Step 3 Press the power button to turn on the DVR. The power indicator glows. On the connected display, the live view screen is displayed.

# 2 The Grand Tour for Rear Panel

The following figure shows the rear panel of model with 4 video input ports (as an example).

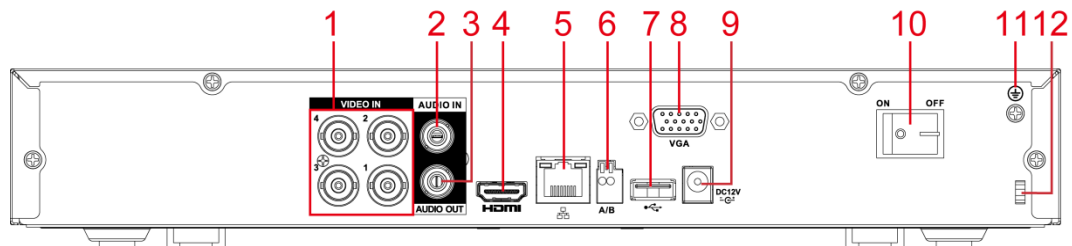


Figure 2-1

No.	Port Name	No.	Port Name	No.	Port Name
1	Video input port	5	Network port	9	Power input port
2	Audio input port	6	RS485 communication port	10	Power button
3	Audio output port	7	USB port	11	Ground
4	HDMI port	8	VGA port	12	Power cable fastener

Table 2-1

# 3

## Local Configurations

### NOTE

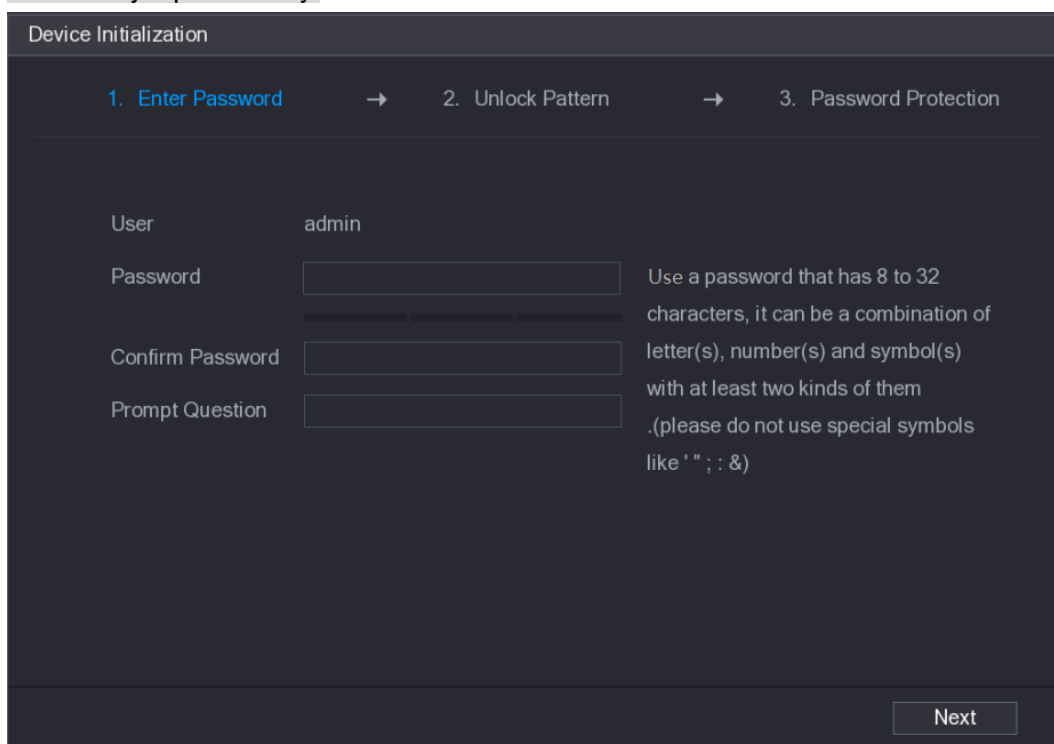
- The interfaces in the Guide are used for introducing the operations and only for reference. The actual product shall govern.
- For details about operations of the DVR, see *User's Manual*.
- To enter the Main Menu, right-click on the live view screen to display the shortcut menu, and then click **Main Menu** and login the system.

### 3.1 Initializing DVR

When booting up for the first time, the **Device Initialization** interface is displayed, see Figure 3-1. You need to configure the password information for the **admin** (by default). If needed, you can also configure the unlock pattern and password protection mode (see Table 3-1).

### NOTE

- The new password can be set from 8 characters through 32 characters and contains at least two types from number, letter and special characters (excluding "", "", ";", ":" and "&"). Please enter a strong password according to the password strength bar indication.
- To secure your DVR, it is strongly recommended to properly keep the password for admin and modify it periodically.



Device Initialization

1. Enter Password → 2. Unlock Pattern → 3. Password Protection

User admin

Password  Use a password that has 8 to 32 characters, it can be a combination of letter(s), number(s) and symbol(s) with at least two kinds of them. (please do not use special symbols like ' ; : &)

Confirm Password

Prompt Question

Next

Figure 3-1

Password Protection Mode	Description
--------------------------	-------------




Password Protection Mode	Description
Security Questions	Configure the security questions and answers. In case you forgot password, enter the answers to the questions can make you reset the password.
 <b>NOTE</b> If you want to configure the security questions function later or you want to change the configurations, select <b>Main Menu &gt; ACCOUNT &gt; USER</b> .	

Table 3-1

## 3.2 Adding Remote Device

- Step 1** Select **Main Menu > CAMERA > REGISTRATION > Registration**, the **Registration** interface is displayed.
- Step 2** Click **IP Search**, the searched devices are displayed.
- Step 3** Add the device by either of the following ways.
- Double-click the device, or select the check box of the device and then click **Add**.
  - Click **Manual Add**, configure the parameters and then click **Apply**.
- The device is displayed in the **Added Device** area. See Figure 3-2.

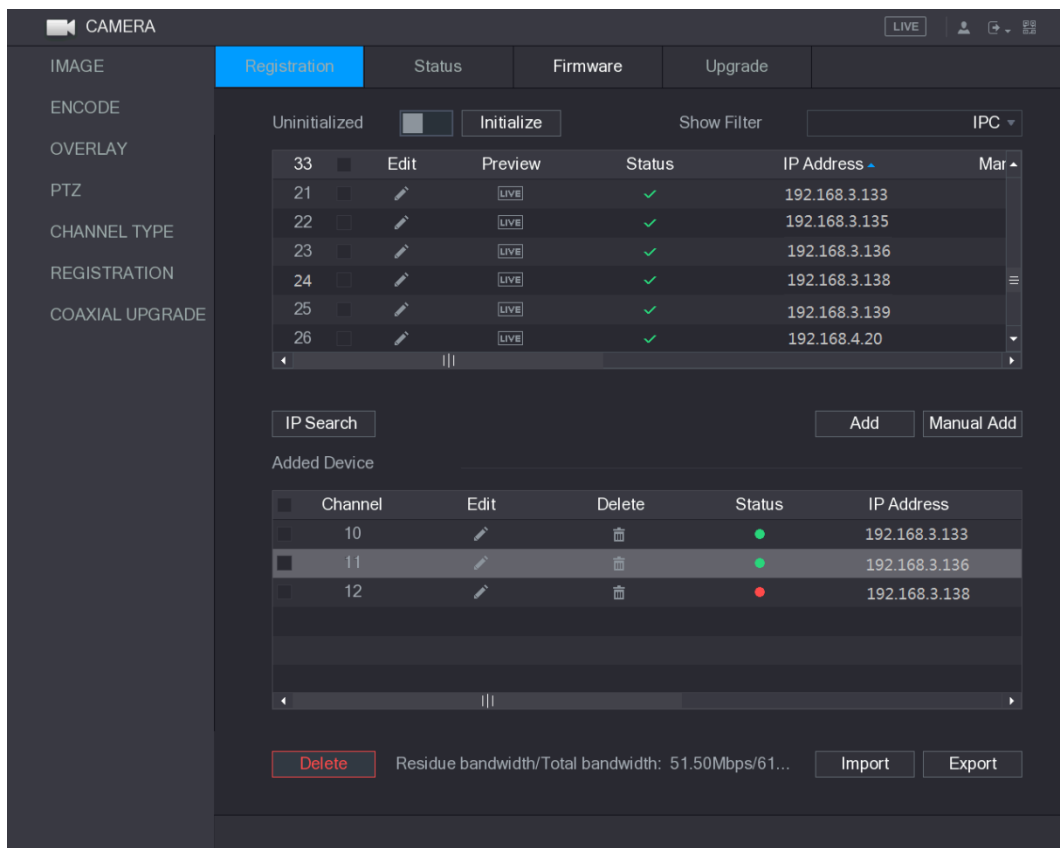


Figure 3-2

## 3.3 Configuring Recording Storage Schedule

Select **Main Menu > STORAGE > SCHEDULE > Record**, the **Record** interface is displayed, see Figure 3-3.

The default setting is 24 hours recording for all channels. You can modify the settings if needed.

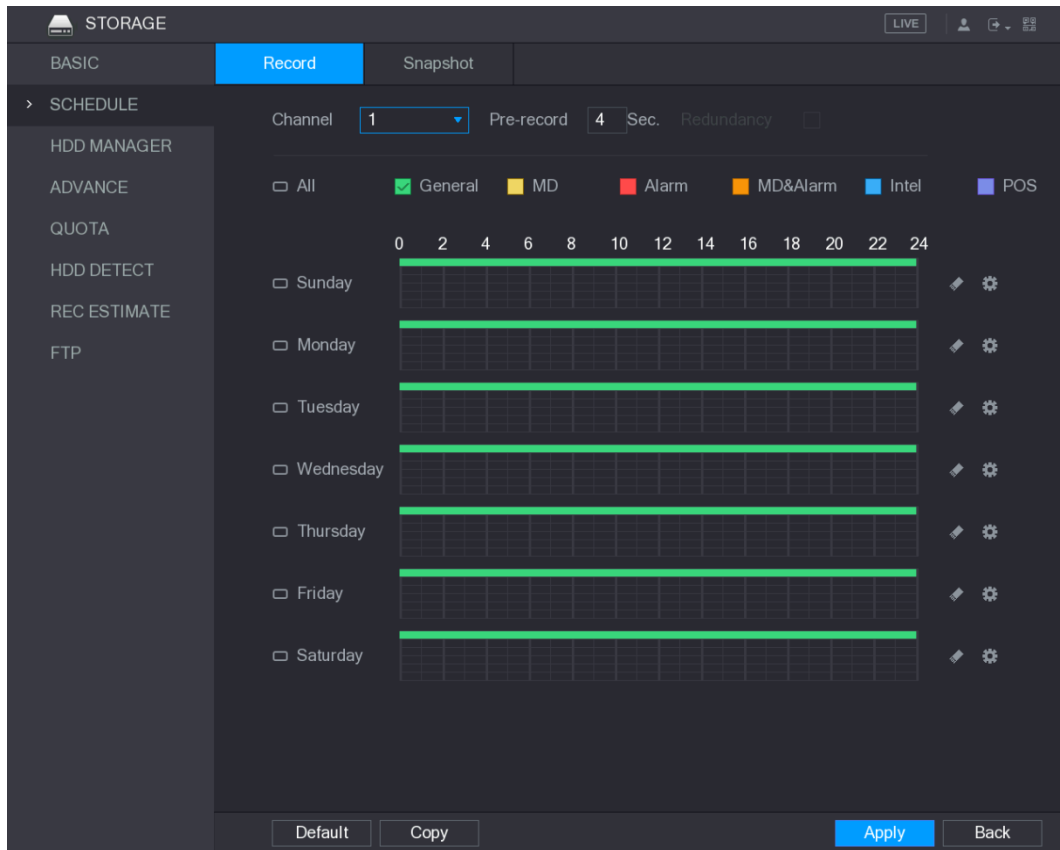


Figure 3-3

### 3.4 Playing Recorded Video

Select **Main Menu > VIDEO**, the video search interface is displayed. See Figure 3-4. You can view, search, and play back the recorded video.



Figure 3-4

### 3.5 Configuring P2P Settings

You can add the DVR into your cell phone client or the platform to manage. For details, please refer to the P2P operation manual.

 NOTE

Make sure the DVR is connected into the Internet, and if yes, in the **Status** box of the P2P interface, it shows **Online**.

#### 3.5.1 Entering P2P Interface

Step 1 Select **Main Menu > NETWORK > P2P**, the **P2P** interface is displayed. See Figure 3-5.

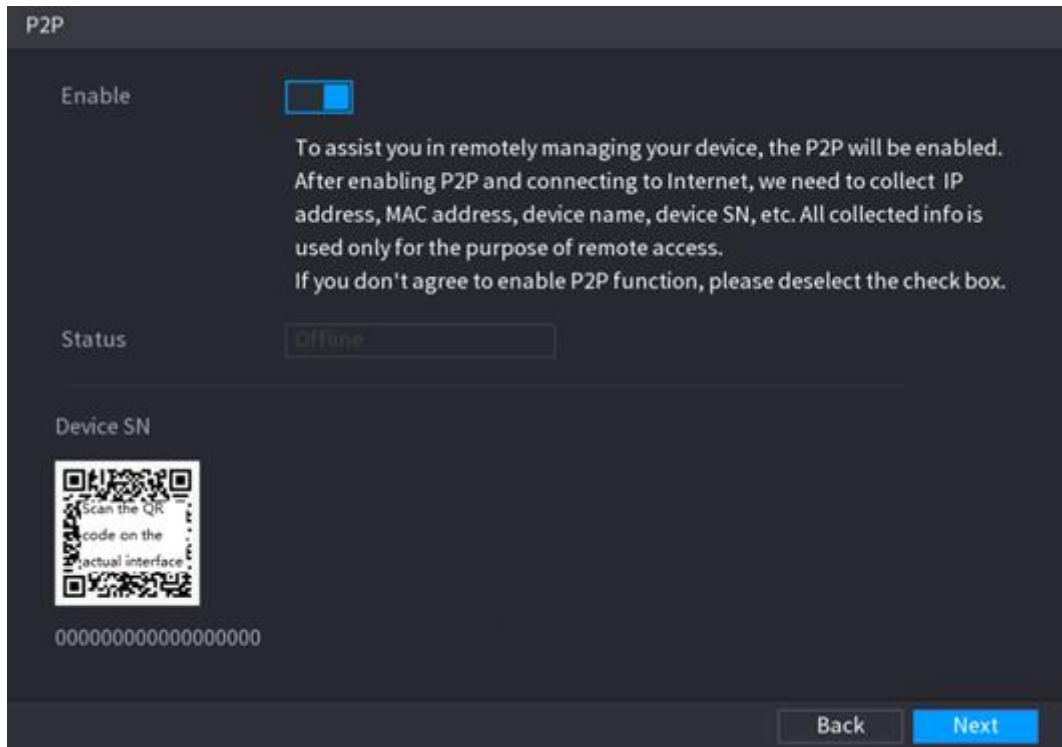


Figure 3-5

Step 2 Enable the P2P function.

Step 3 Click **Apply**. You can start adding the DVR into Cell Phone Client or the platform.

### 3.5.2 Adding DVR into Cell Phone Client

To use P2P function, take adding wired device into Cell Phone Client as an example.

Step 1 Use your cell phone to download ICRSS PRO **Cell Phone Client**.

Step 2 Open the application and tap , the menu is displayed.

Step 3 Tap **Device Manager** > > **Add Device**, the **Add Device** interface is displayed. See Figure 3-6.

Step 4 Tap **P2P**, enter a name for the DVR, the username and password, scan the QR code under **Device SN**, and then tap **Start Live Preview**. The DVR is added and displayed on the live view interface of the cell phone. See Figure 3-7.

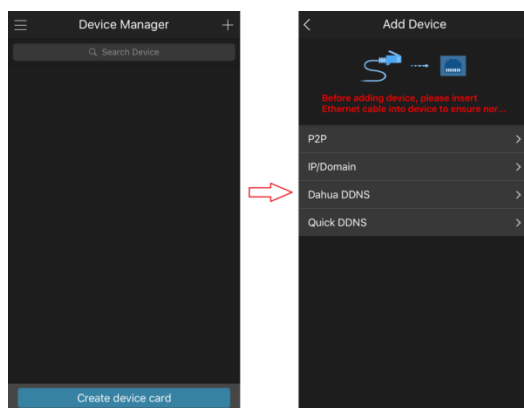


Figure 3-6

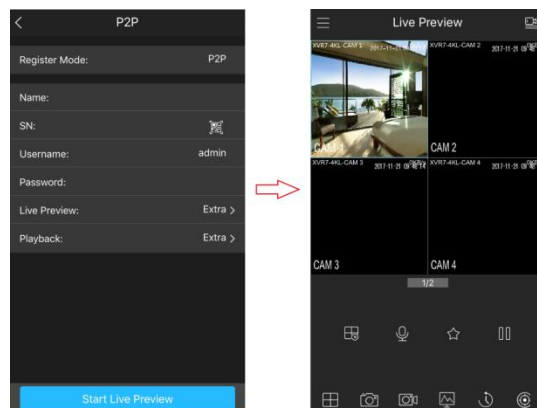



Figure 3-7

## 3.6 Logout

On the top right of the Main Menu interface or any interface after you have entered the Main Menu, click .

- Select **Logout**, you will log out the DVR.
- Select **Reboot**, the DVR will be rebooted.
- Select **Shutdown**, the DVR will be turned off.

You can also press the power button on the DVR to turn it off.

# 4 Web Login

Open the browser, enter the IP address of the DVR, and then press **Enter** key. The **Login in** dialog box is displayed. See Figure 4-1. Properly enter the user name and password to login the web. For details, see *User's Manual*.

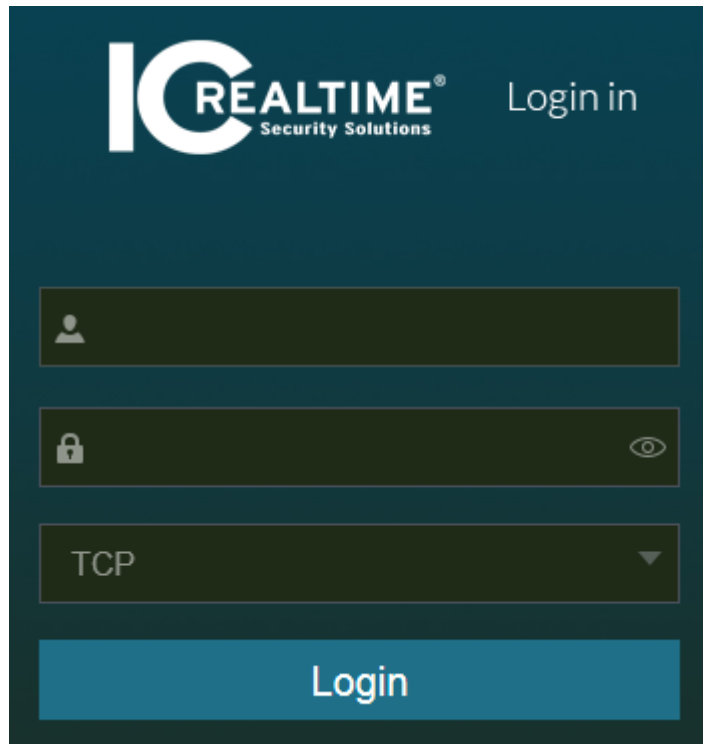


Figure 4-1

 NOTE

- Device initialization is required at the first login.
- The default administrator account is **admin**. The password is the one that was configured during initializing settings. To security your account, it is recommended to keep the password properly and change it periodically.
- You can select the protocol type as **TCP**, **UDP**, or **MULTICAST** depending on the networking structure. The default is **TCP**.
- If you forgot the password, click **Forgot Password?** to reset the password.
- When entering the **Live** interface for the first time, follow the onscreen instructions "Please install plugins first!" to install the plugins.