



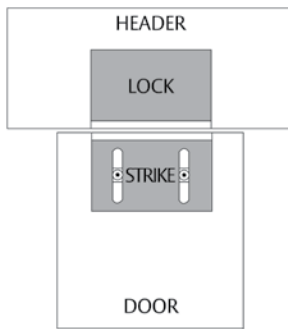
SAM-Shear Aligning Magnalock®



Application - 1200 lb. holding force Shear Aligning Magnalock mounts fully concealed into wood, steel or aluminum doors. SAM can also be installed in any position on the door - top, side or bottom and is ideal for swing through and sliding doors.

Features and Benefits

- Patented instant release circuit - no residual magnetism
- Mounts easily with a minimum of tools
- Fully sealed electronics - tamper proof and weatherproof
- Mounted using steel machine screws
- Architectural brushed stainless steel finish (US32D/630)
- All ferrous metal surfaces plated to MIL specification
- Hardware accessories available to configure any opening type including mounting brackets
- Ten feet [3.05m] of jacketed, stranded conductor
- Automatic dual voltage - no field adjustment required
- Lock options include *BondSTAT* magnetic bond sensor and integrated door position switch
- UL Listed



Specification Data

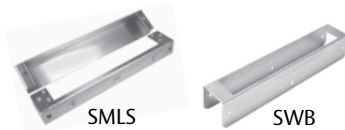
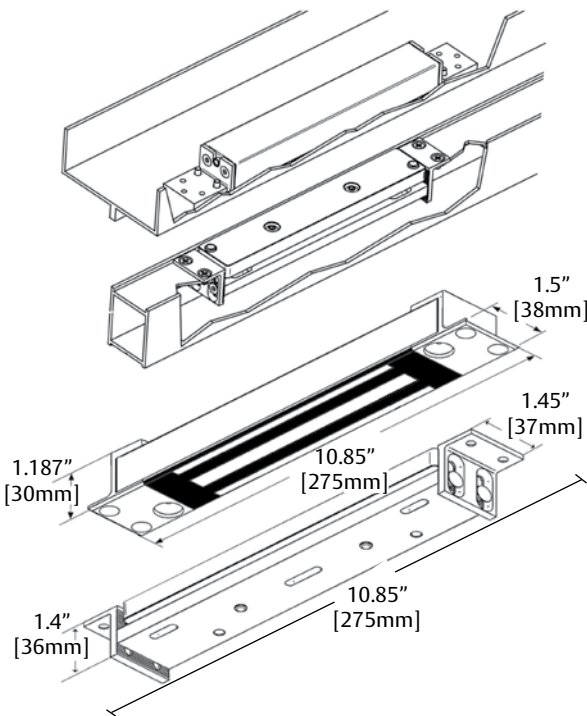
Holding Force: 1,200 lbs. [544 Kg.]
 Current Draw and Voltage: 320mA at 12VDC; 170mA at 24VDC
 Operating Temperature: -40 to +140F [-40 to +60C]
 Shipping Weight: 6 lbs.
 Warranty: MagnaCare Lifetime Replacement Warranty

How To Order

Part #	Description
SAM	Shear Aligning Magnalock
SAMB	SAM, Mag Bond Sensor
SAMBD	SAM, Mag Bond Sensor, Door Position Switch
SAMD	SAM, Door Position Switch
SAMN	SAM, Narrow Strike Plate

Optional SAM Brackets & Accessories

Prefix	Description
SMLS	Surface Mount Lock Housing
SMSS	Surface Mount Strike Housing
SWB	SAM Wood Bracket



U.S. Patents:
 #6,007,119, #6,135,515
 NEMA: 4X IEC: IP 66

