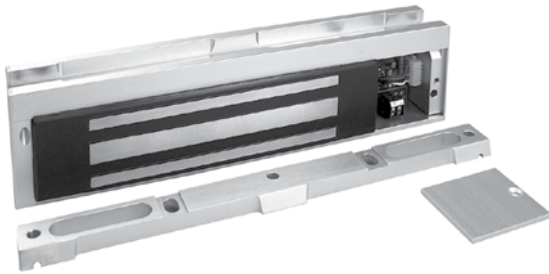




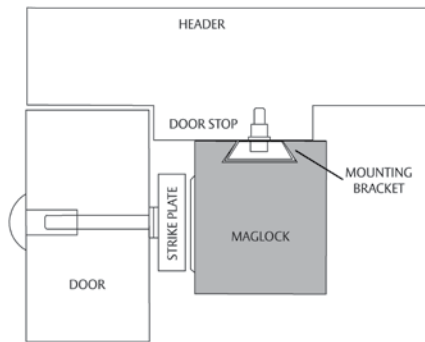
M38 600lb Holding Force Magnalock®



Application - 600 lb. holding force Magnalock with automatic dual voltage. This model offers a built-in wire access chamber and bracket mount design for a unique and simplified method of installation. Recommended for applications where physical assault on the door is not expected, like access controlled interior rooms and secure areas within buildings.

Features and Benefits

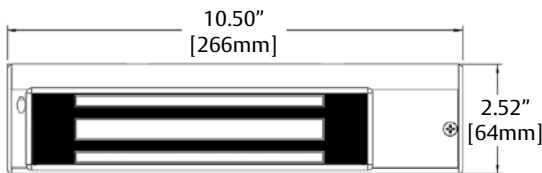
- Patented instant release circuit - no residual magnetism
- Surface mounts easily with mounting bracket using a minimum of tools
- Internal wire access chamber
- Mounted using steel machine screws into blind finishing nuts
- Brushed aluminum finish
- All ferrous metal surfaces plated to MIL specification
- Automatic dual voltage - no field adjustment required
- Dress covers available
- Lock options include Senstat, door position switch, LED indicator and anti-tamper switch
- UL Listed



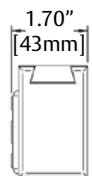
Specification Data

Holding Force: 600 lbs. [272 Kg.]
 Current Draw and Voltage: 320mA at 12VDC; 170mA at 24VDC
 Operating Temperature: +32 to +110F [0 to +43C]
 Shipping Weight: 8 lbs.
 Warranty: MagnaCare Lifetime Replacement Warranty

How To Order

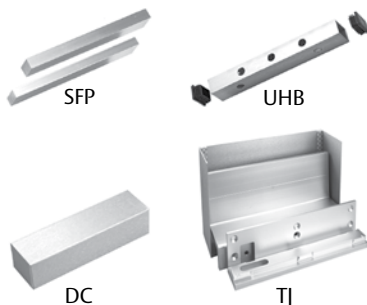


The M38 requires 2.25 inches of flat mounting space



Part #	Description
M38	Magnalock Model 38
M38D	M38, Door Position
M38DL	M38, Door Position, LED
M38DLS	M38, Door Position, LED, Senstat
M38DLST	M38, Door Position, LED, Senstat, Tamper
M38DLT	M38, Door Position, LED, Tamper
M38DS	M38, Door Position, Senstat
M38DST	M38, Door Position, Senstat, Tamper
M38DT	M38, Door Position, Tamper
M38L	M38, LED
M38LS	M38, LED, Senstat
M38LT	M38, LED, Tamper
M38S	M38, Senstat
M38ST	M38, Senstat, Tamper
M38T	M38, Tamper

See page 11 for more information on M38 Lock Options



Optional M38 Brackets & Accessories

Prefix	Description
SFP	Stop Filler Plate
UHB	Universal Header Bracket
DC	Dress Cover
TJ	Top Jamb Kit (inswing)

