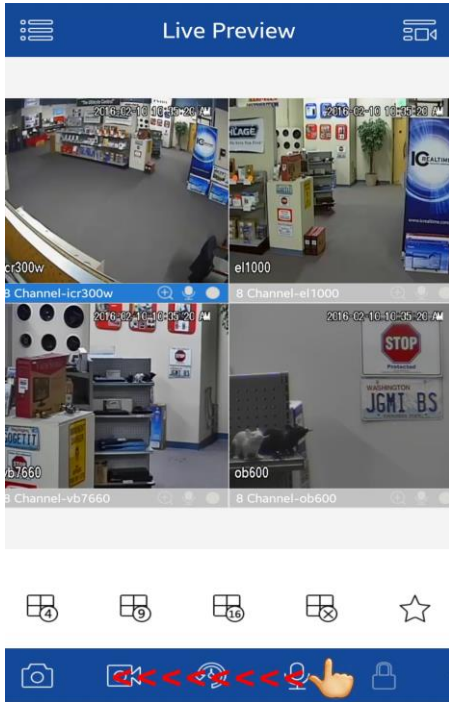


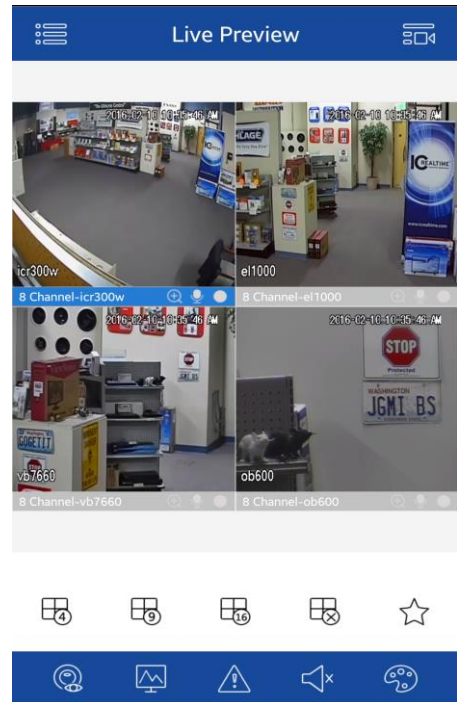
HOW TO TURN ON THE SIREN THE FROM THE ICRSS PRO APP



1.



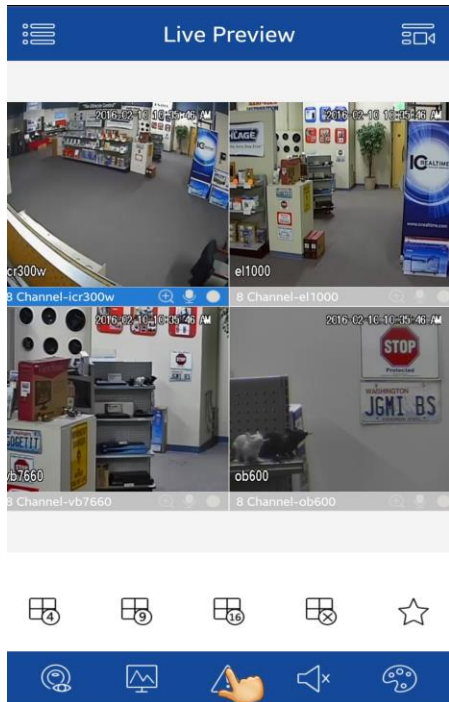
With the app open AND cameras pulled up, slide your finger along the blue tool bar at the bottom of the screen to scroll through the options.



2.



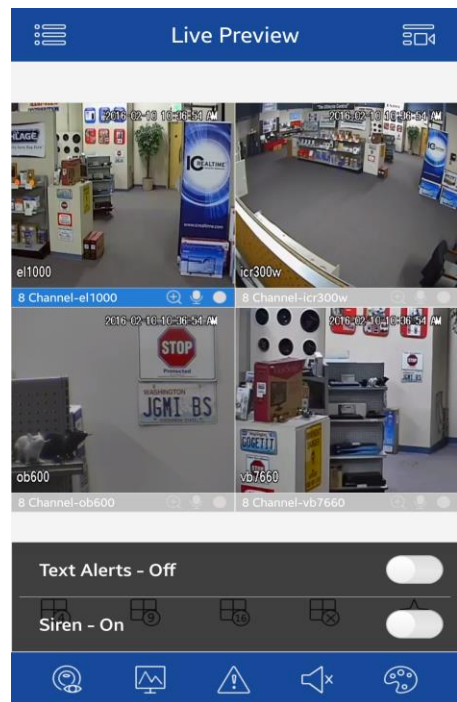
Scroll until you find either a  button or a  button. The only difference between the two is one is on iPhone and one is on Android.

3.



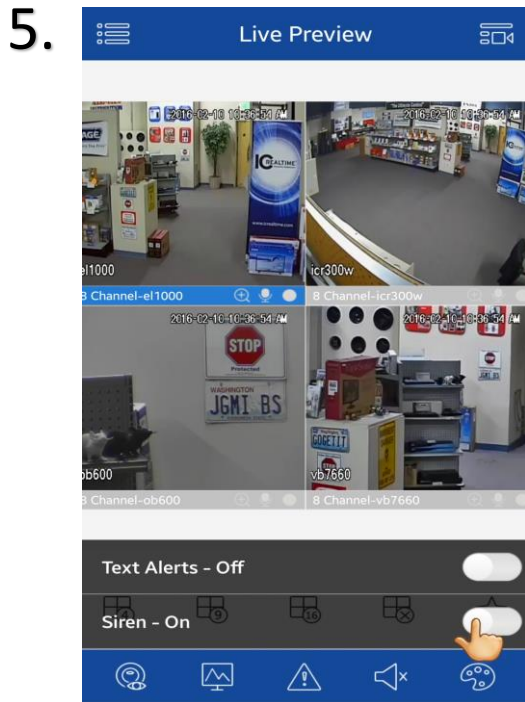
Once you have found the  or the  button, tap on it to prompt a menu.

4.

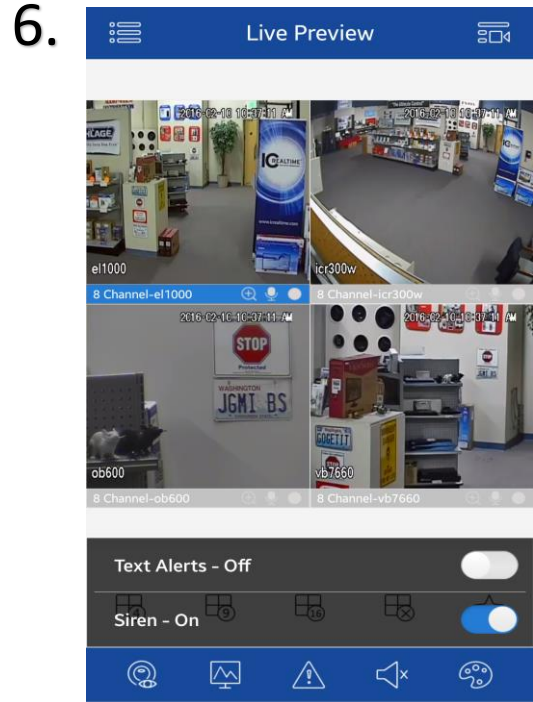


The default menu will be labeled as **Alarm Out 1** and **Alarm Out 2**. The siren should be wired into **Alarm Out 2** as illustrated by the "Siren - On" label in the figure above.

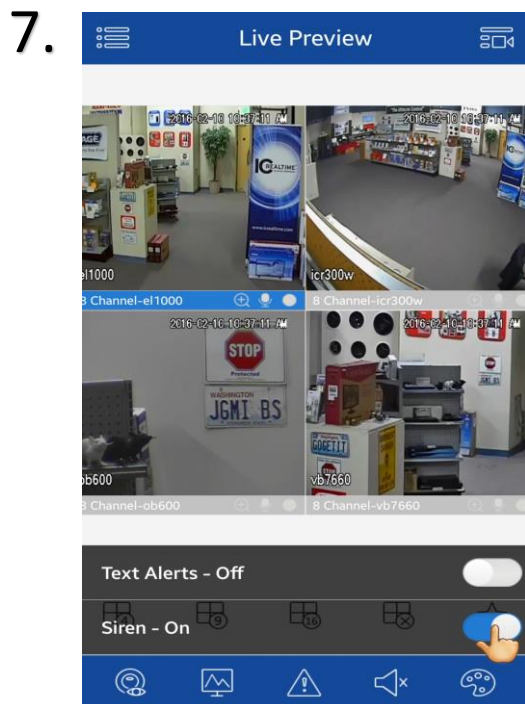
HOW TO TURN ON THE SIREN THE FROM THE ICRSS PRO APP



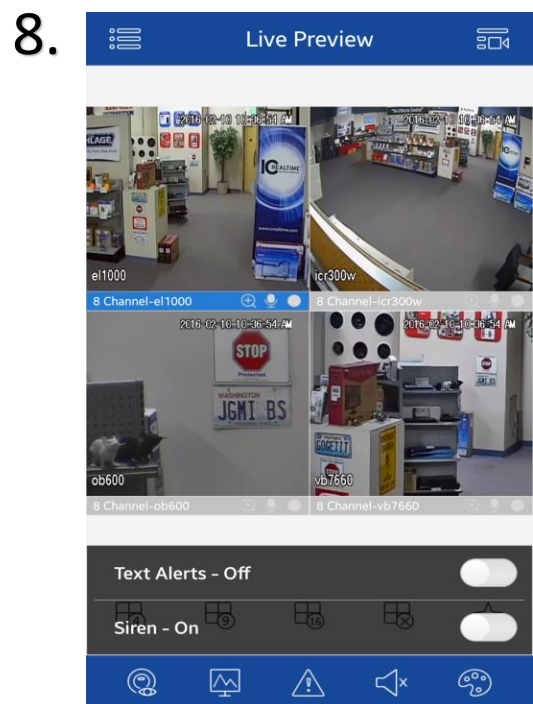
When the siren is **OFF**, the icon to the right of **ALARM INPUT 2** will be to the left of the slide and the background of the slide will be gray. Tap on the icon to turn it **ON**.



After tapping on the icon, the alarm will sound and the button should have moved to the right of the slide and the background should have turned either blue or green depending on the device that you are using.



To turn the siren back **OFF**, simply tap on the same or icon to the right of **ALARM OUT 2** that was used to turn them **ON**.



The or to the right of **ALARM OUT 2** will have returned to the original , signifying that the siren is now **OFF**.